



**GREEN ELEGANCE**

CONNECTIVITY | ELEGANCE | COMFORT

**Welcome to**

Green Elegance



# Location Map



## Conveniently Connected

Located near Balasan Bridge on National Highway and surrounded by prestigious universities, Green Elegance offers the convenience of easy access to Bagdogra Airport while ensuring a peaceful living experience away from the hustle and bustle of the city. Our unique approach to urban living guarantees you an unparalleled comfort living experience that you won't find anywhere else.



  
**GREEN ELEGANCE**  
CONNECTIVITY | ELEGANCE | COMFORT



Bungalow

Club House

Escape the chaos of the city and embrace a serene lifestyle at Green Elegance. Nestled amidst nature, our residential community offers a perfect blend of green living and modern aesthetics. The apartments at Green Elegance are designed to facilitate a smart lifestyle, allowing the warm crimson rays of the sun to permeate your bedroom and the gentle touch of the south wind to enhance your day, while the serene surroundings of the lawn and nearby greenery instill a sense of cosmic harmony with nature.

Cosmic harmony  
With Nature







Tailored to elevate your  
Leisurely Evenings





Swimming Pool

With its focus on promoting healthy living, each apartment at Green Elegance is equipped with a dedicated balcony that allows you to bring a piece of nature indoors and indulge in the refreshing outdoors. Along with its luxurious amenities, residents can also relish worldly pleasures like a swimming pool, gym, games room, playroom, and community hall, all complemented by the convenience of 24-hour power supply.



Swimming Pool



Gymnasium



Club House



Parking Lot



Games room



Kid's Playroom

Indulge in the opulence of a  
Modern  
Urban Lifestyle







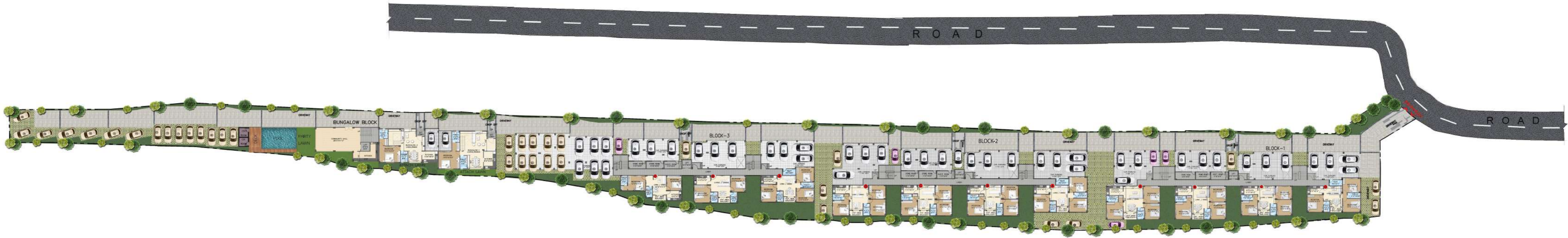
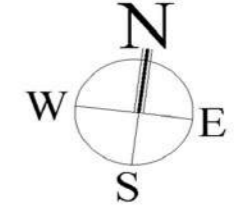
Games room



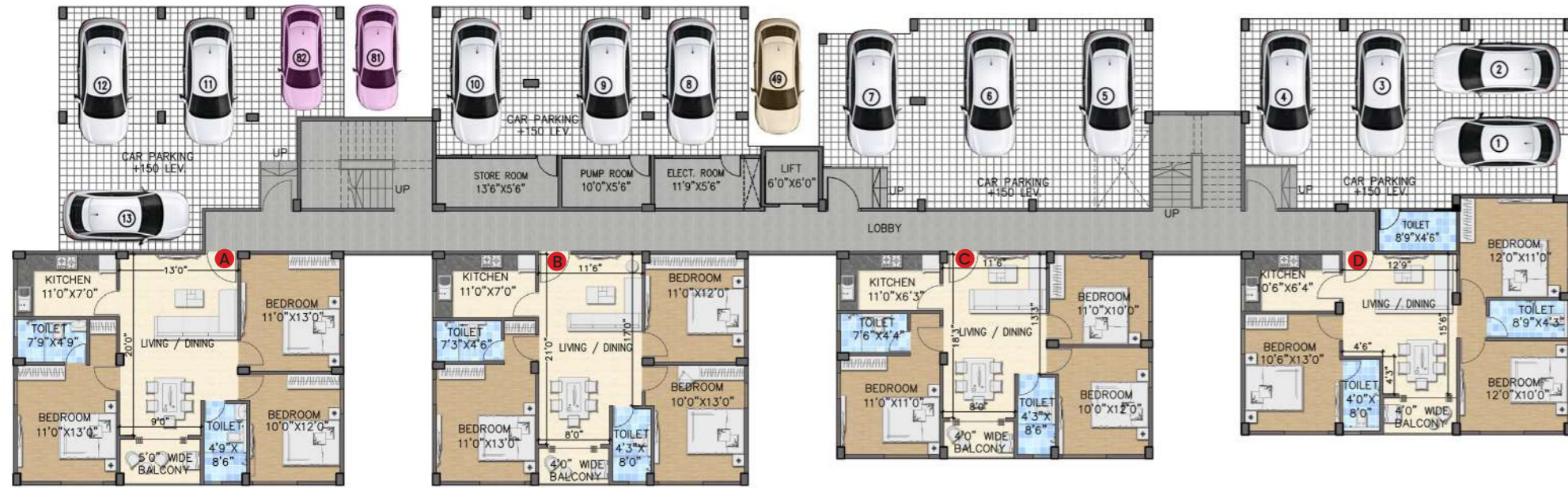
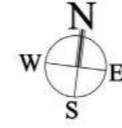
Kid's Playroom



# Master Plan



# Ground Floor Plan Block 1



BLOCK 1 Ground Floor				
FLAT NO.	TYPE	RERA CARPET	BUILTUP	SBUA
A	3 BHK	865	963	1330
B	3 BHK	838	922	1275
C	3 BHK	737	819	1130
D	3 BHK	753	838	1155

# Typical Floor Plan Block 1



BLOCK 1 1st to 3rd Floors				
FLAT NO.	TYPE	RERA CARPET	BUILTUP	SBUA
A	2 BHK	614	731	1010
B	2 BHK	681	799	1105
C	2 BHK	671	763	1055
D	3 BHK	865	963	1330
E	3 BHK	838	922	1275
F	3 BHK	737	819	1130
G	3 BHK	753	838	1155
H	2 BHK	653	757	1045

Isometric  
Block 1 H 2BHK



Ground Floor Plan  
Block 2



BLOCK 2 Ground Floor				
FLAT NO.	TYPE	RERA CARPET	BUILTUP	SBUA
A	3 BHK	753	838	1155
B	3 BHK	737	819	1130
C	3 BHK	737	819	1130
D	3 BHK	764	847	1170

Typical Floor Plan  
**Block 2**



BLOCK 2 1st to 3rd Floors				
FLAT NO.	TYPE	RERA CARPET	BUILTUP	SBUA
A	2 BHK	614	731	1010
B	2 BHK	681	799	1105
C	3 BHK	835	923	1275
D	3 BHK	764	847	1170
E	3 BHK	738	819	1130
F	3 BHK	738	819	1130
G	3 BHK	753	837	1155
H	2 BHK	653	757	1045

Isometric  
**Block 2 D 3BHK**





Ground Floor Plan  
**Block 3**



BLOCK 3 Ground Floor				
FLAT NO.	TYPE	RERA CARPET	BUILTUP	SBUA
A	3 BHK	753	838	1130
B	2 BHK	619	700	945
C	2 BHK	579	664	895

Typical Floor Plan  
**Block 3**



BLOCK 3 1st to 3rd Floors				
FLAT NO.	TYPE	RERA CARPET	BUILTUP	SBUA
A	2 BHK	614	731	1010
B	2 BHK	681	799	1105
C	2 BHK	545	610	845
D	3 BHK	844	945	1305
E	2 BHK	579	664	915
F	2 BHK	619	700	970
G	3 BHK	753	838	1155
H	2 BHK	652	756	1045

Isometric  
 Block 3 D 3BHK



Bungalow Block  
 Floor Plans

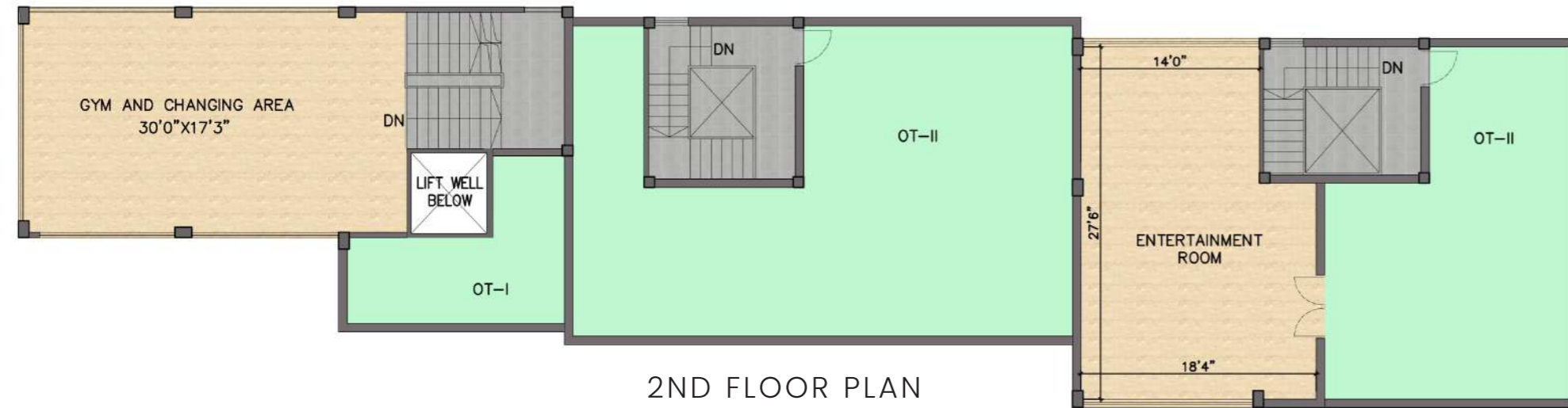


GROUND FLOOR PLAN

BUNGLOWS/VILLAS				
VILLA No.	TYPE	CARPET	BUILTUP	SBUA
1	3 BHK PRIVATE TERRACE		2788	3345 480
2	3 BHK PRIVATE TERRACE		2215	2460 860



1ST FLOOR PLAN



2ND FLOOR PLAN

# Project Specification :

**Structure:** \_\_\_\_\_

RCC Foundation as per Geotechnical Engineers recommendations

**Doors:** \_\_\_\_\_

Premium Quality Flush Doors

**Windows:** \_\_\_\_\_

Premium Quality Aluminum Windows

**Floors:** \_\_\_\_\_

Drawing & Dining – Vitrified Tiles  
 Stairs – Granite  
 Bedrooms – Vitrified Tiles  
 Master Bedroom – Wooden Finish Vitrified Tiles

## Electricals:

---

Concealed copper wiring with modular switches  
Adequate light and power points  
Standard main distribution box (DB)  
TV/Telephone Points  
AC Points in all rooms

## Kitchen:

---

Counter Table – Granite Top with Stainless Steel Sink  
Walls – Ceramic Tiles up to 2 feet height

## Amenities:

---

Swimming Pool	Automatic Lifts In Each Block
Gymnasium	24 Hrs Security
Club House	Cctv Surveillance
Parking Lot	Terrace Sitouts
Games Room	Open Air Party Deck
Kid's Playroom	



## Ongoing Projects



📍 Iskon Mandir Road



📍 2.5 Mile, Check Post



📍 Shastri Nagar



GREEN RETREAT  
SILIGURI

📍 Shastri Nagar



GREEN HERITAGE  
APARTMENTS

📍 Jyoti Nagar



NALLAMAS  
EUROPA  
SERENITY BEGINS HERE

📍 Dagapur



# GREEN ELEGANCE

CONNECTIVITY | ELEGANCE | COMFORT

**Contact :**

9339361344

**Site Address :**

Near Koushal Hyundai, Opp. Jesu Ashram, Matigara, Siliguri

**Office Address :**

T -17, 3rd floor Goyal plaza building, opposite of sachitra hotel,  
sevoke road, siliguri - 734001

**Architect :**



Developed By



Green Hill Group